

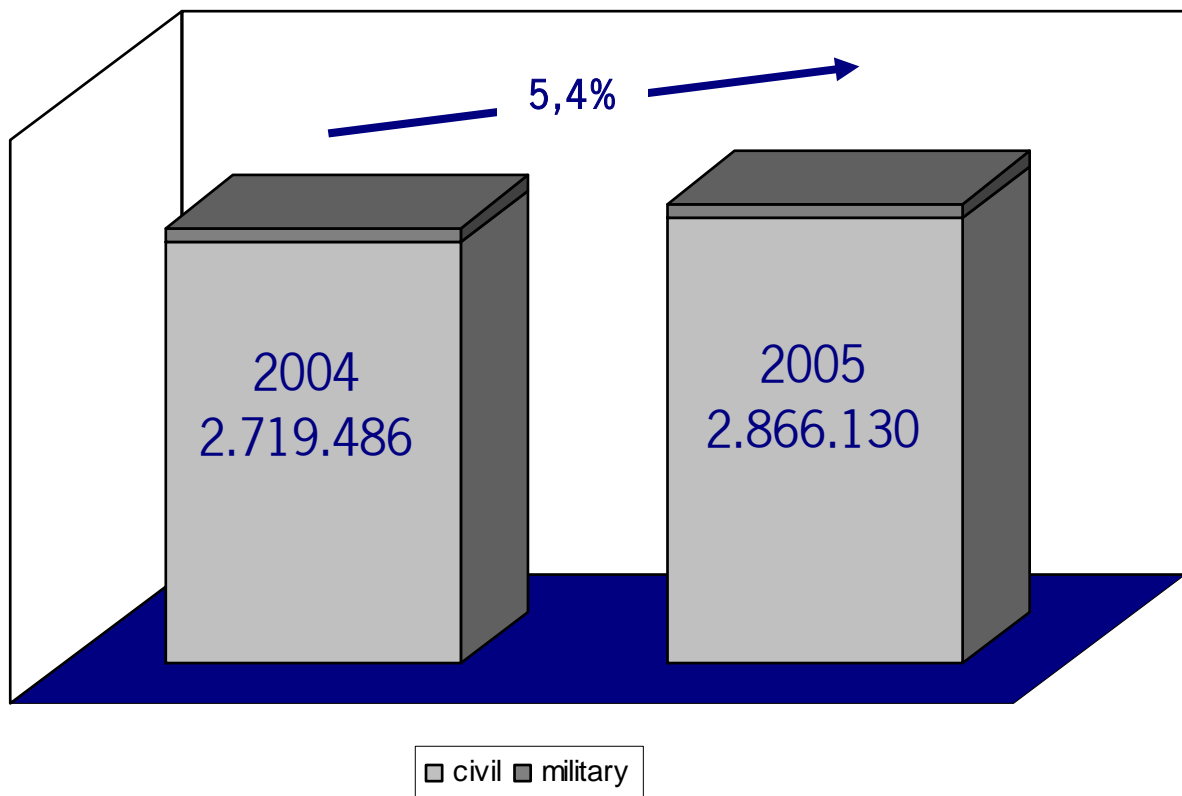


DFS Deutsche Flugsicherung

Air traffic statistics

Annual summary 2005

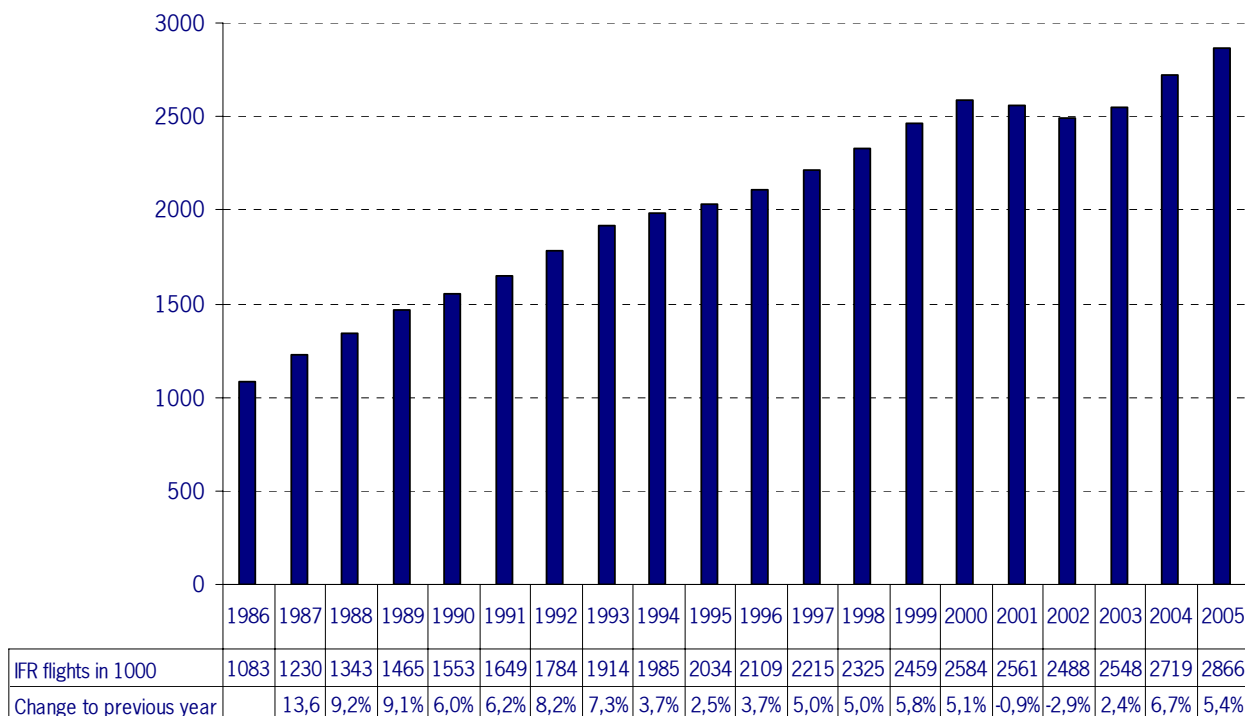
IFR flights in the Federal Republic of Germany 2005



IFR flights in the Federal Republic of Germany 2005

	2005	2004	Trend
Civil flights	2.779.433	2.625.904	5,8%
Military flights	86.697	93.582	-7,4%
Total	2.866.130	2.719.486	5,4%

Development of IFR traffic 1986 to 2005



Comparison of average flight distances

Comparison of the average direct distance (great-circle distances) resp. average flight plan distance to the average of the distances determined by the STANLY system (radar tracks), including departure, holding and approach procedures.

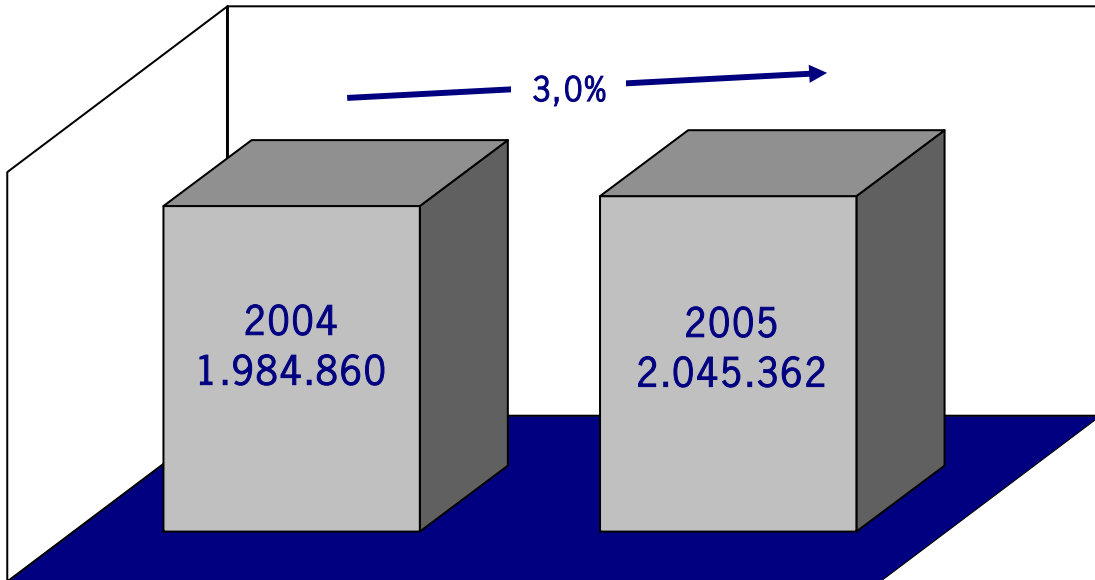
	2005		2004	
	Average Distance in NM	Delta to actual flight distance	Average Distance in NM	Delta to actual flight distance
Actual Flight Distance	200,9		200,0	
Great Circle Distance	186,0	14,9	179,1	20,8
Flight Plan Distance	198,5	2,4	192,3	7,7

IFR take-offs and landings at international and regional German airports 2005

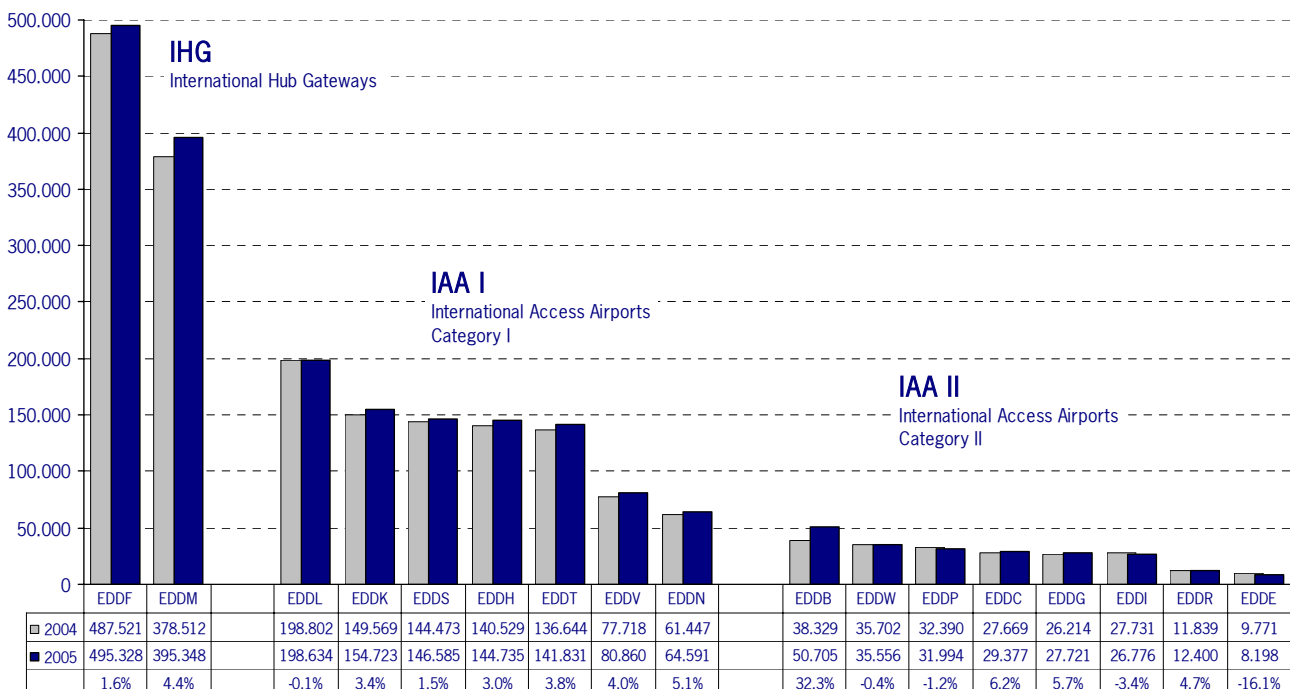
	2005	2004	Trend
International airports	2.045.362	1.984.860	3,0%
Regional airports	170.584	164.495	3,7%
Total	2.215.946	2.149.355	3,1%

IFR take-offs and landings at international airports

Berlin-Schönefeld, Berlin-Tegel, Berlin-Tempelhof, Bremen, Dresden, Düsseldorf, Erfurt, Frankfurt, Hamburg, Hannover, Köln, Leipzig, München, Münster-Osnabrück, Nürnberg, Saarbrücken, Stuttgart



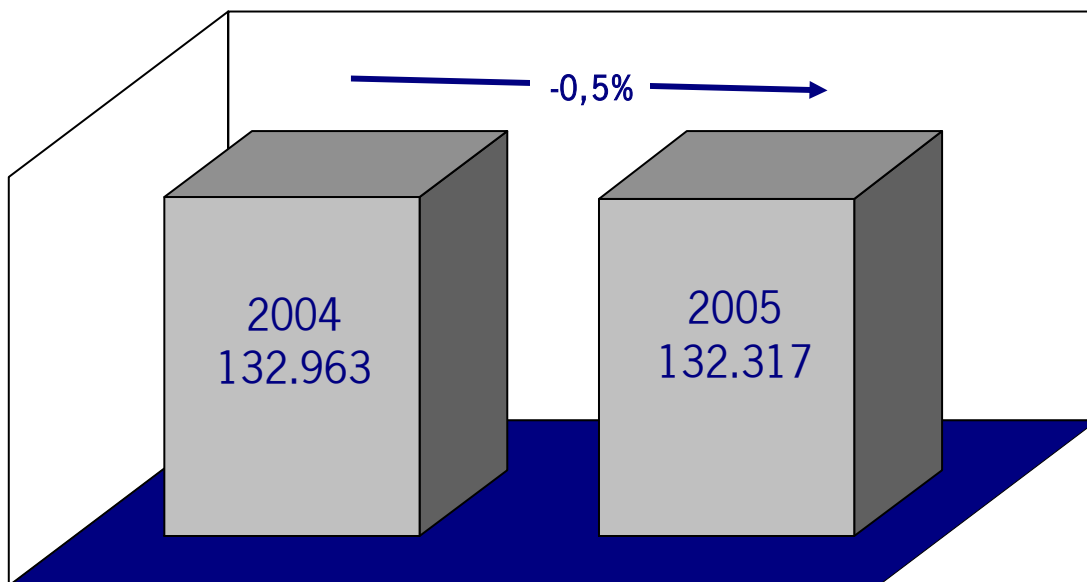
Traffic count of IFR take-offs and landings at international airports 2005



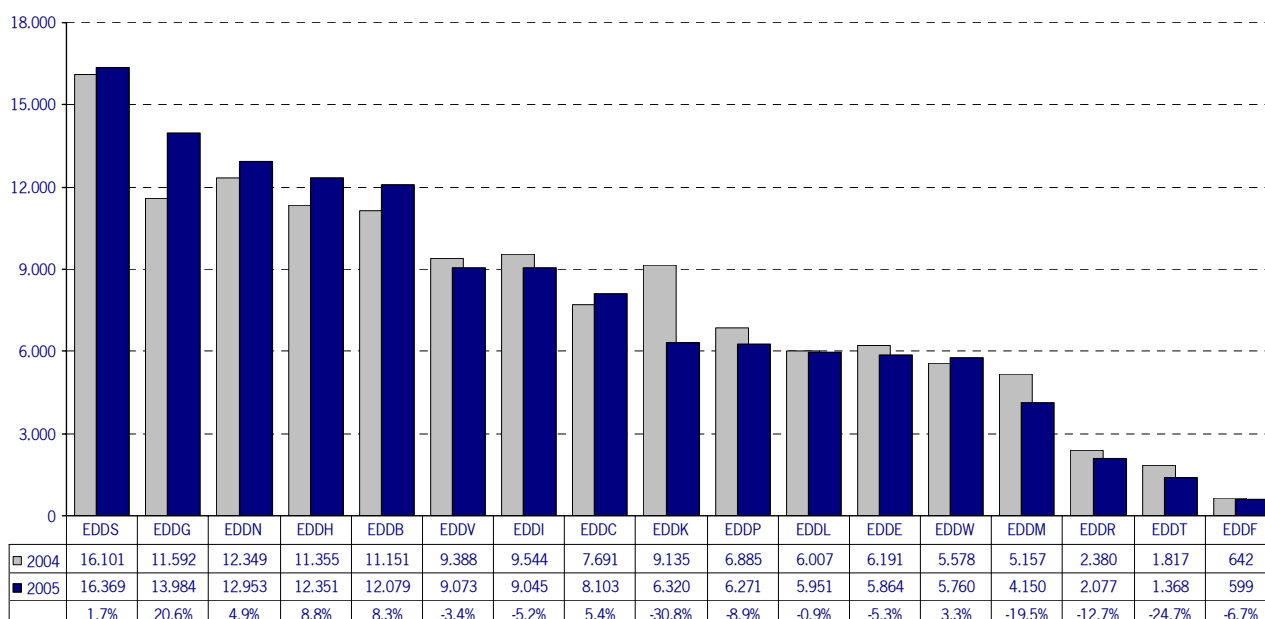
International airports

VFR take-offs, landings and touch & goes at international airports

Berlin-Schönefeld, Berlin-Tegel, Berlin-Tempelhof, Bremen, Dresden, Düsseldorf, Erfurt, Frankfurt, Hamburg, Hannover, Köln, Leipzig, München, Münster-Osnabrück, Nürnberg, Saarbrücken, Stuttgart



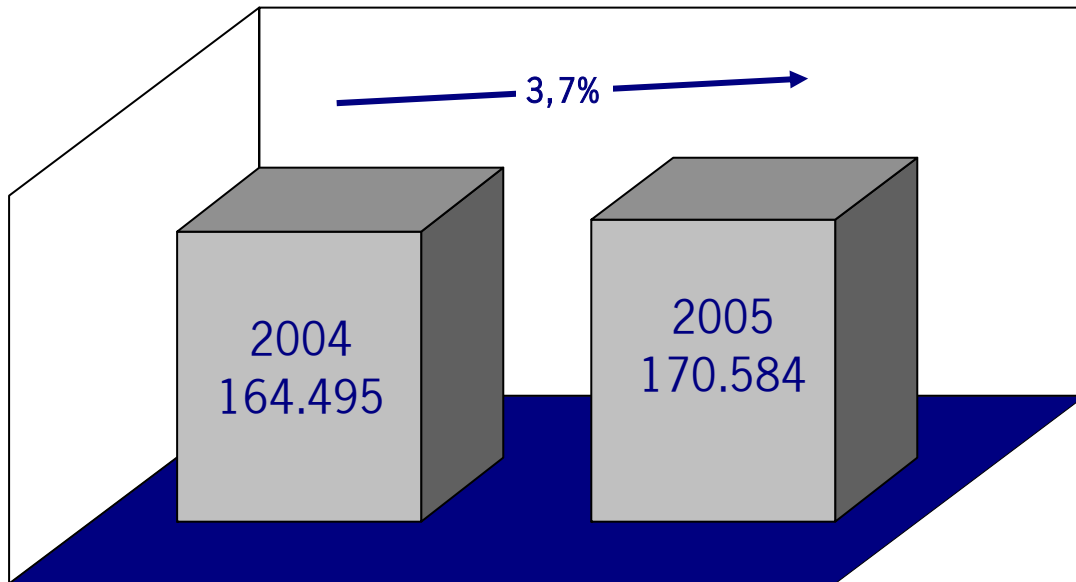
Traffic count of VFR take-offs, landings and touch & goes at international airports



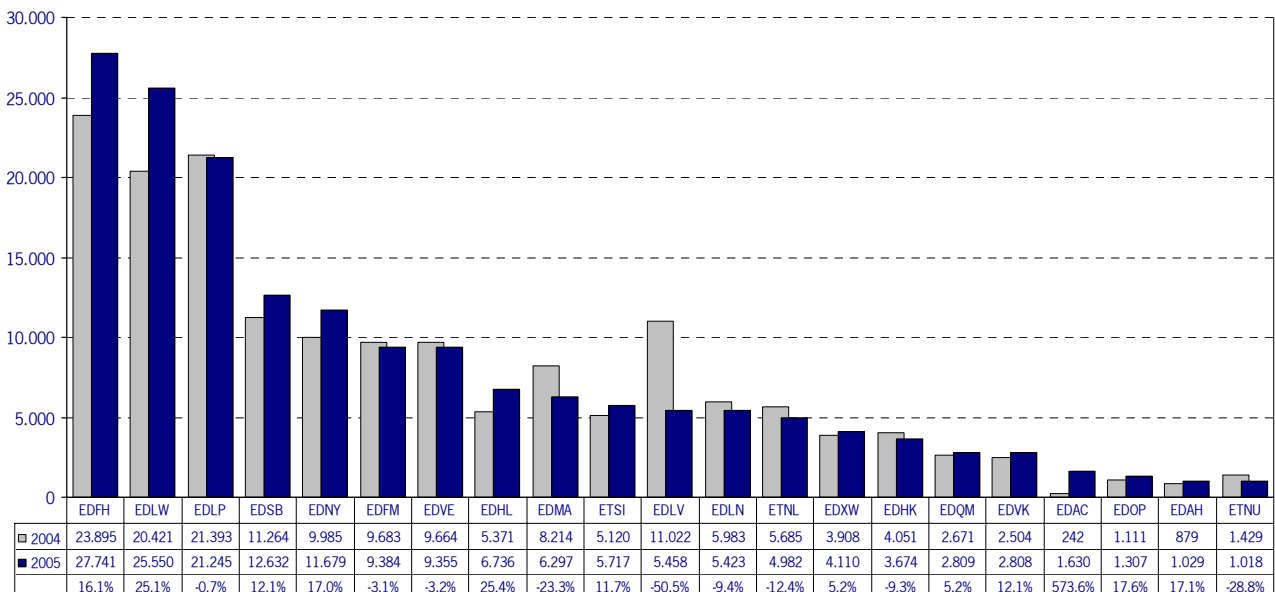
VFR at international airports

IFR take-offs and landings at regional airports

Altenburg-Nobitz, Augsburg, Bayreuth, Braunschweig, Dortmund, Friedrichshafen, Hahn, Heringsdorf, Hof, Karlsruhe-Baden, Kassel, Kiel, Laage, Lübeck, Mannheim, Mönchengladbach, Niederrhein, Neubrandenburg, Paderborn, Schwerin, Westerland.



Traffic count of IFR take-offs and landings at regional airports 2005



Regional airports